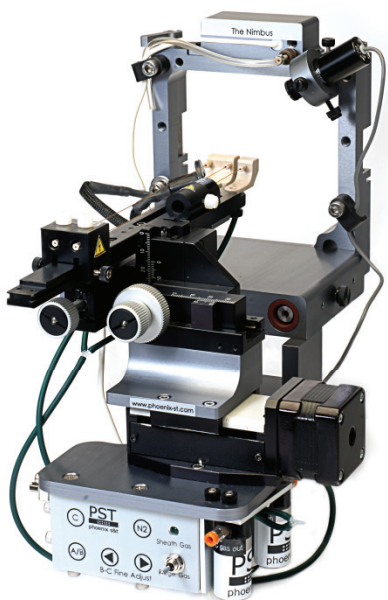
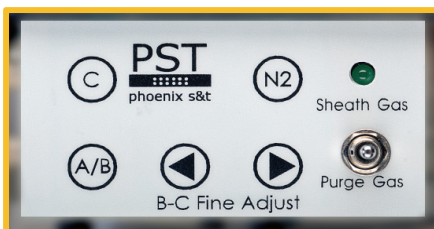


The Nimbus NanoLC Dual Column System



The Nimbus-Thermo: Compatible with Thermo MS

- Perform MS analysis faster, better and more economically without having to add a new computer or new software package
- Two modes of operation: alternating analysis between the two columns or triplicate runs on each column for clinical applications
- Highly effective for biological sample matrix analyses, e.g. proteomics, metabolomics, biomarker discovery and method development

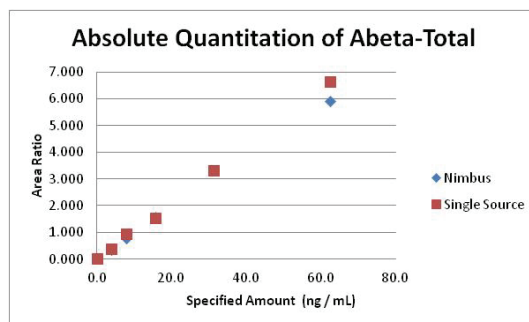


No software package is needed. Simple push buttons control the fine adjustment of the column and emitter positions.



Double your productivity Simply plug and spray - no new PC or software

- Substantially reduces carryover and improves data quality by washing the sample, column and emitter off-axis
- The high voltage for spraying is switched off for the off-axis column, eliminating any possibility for cross-talk.
- On-board computer positions one column for analysis while performing off-axis loading, washing and equilibration on the second column
- Dual column automated system increases nano-LC throughput by up to 100%
- Proprietary Active Spray Control utilizes nitrogen to purge and clean the emitter



Calibration curve of total Amyloid beta from a serial dilution of a mixture of Abeta38, 40 and 42. Data was obtained with the Nimbus dual-column source and compared with a single column source (PST-MS Thermo) – same results in half the time.

We thank K. Mawuenyega, PhD, for the use of his data.

New!

- Third column position for calibration
- Upgrade AB Sciex Nanospray II® to the Nimbus system

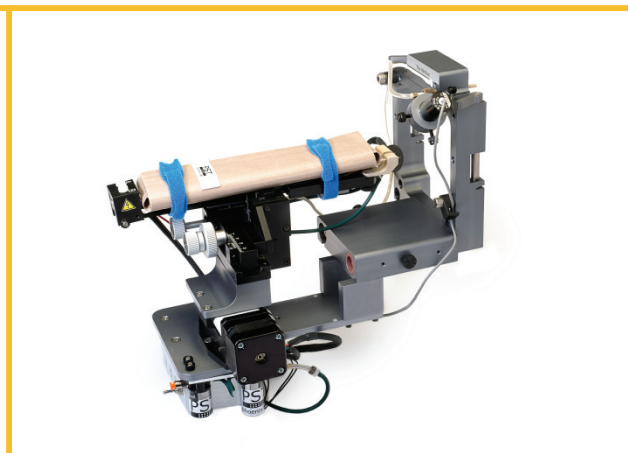
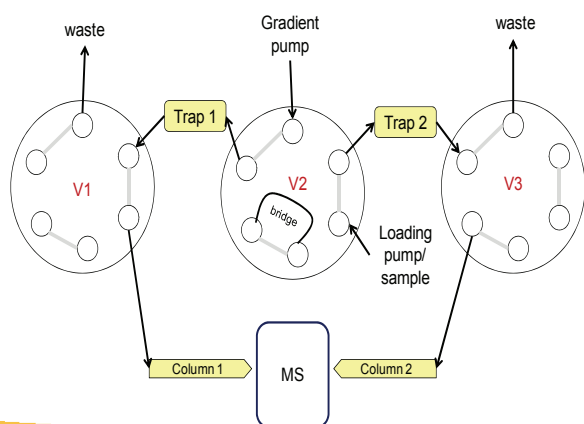
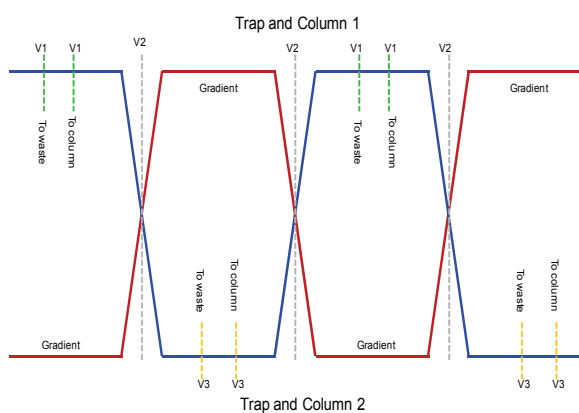
The Nimbus NanoLC Dual Column System

Compatible with Thermo and AB Sciex Mass Spectrometer



- Available as Upgrade to the AB Sciex Nanospray sources.
- Compatible with Phoenix S&T's column heaters.
- Dual trap-analytical column analysis can be carried out with additional valves
- Compatible with a wide range of LC's.
- Requires at least one gradient pump and one loading pump

The Nimbus Upgrade for the AB Sciex Nanospray sources and control electronics.



The Butterfly Portfolio heater mounted on the column rail of the Nimbus.

Configuration and timing of the extra valves used in a dual-trap-analytical column analysis using the Nimbus