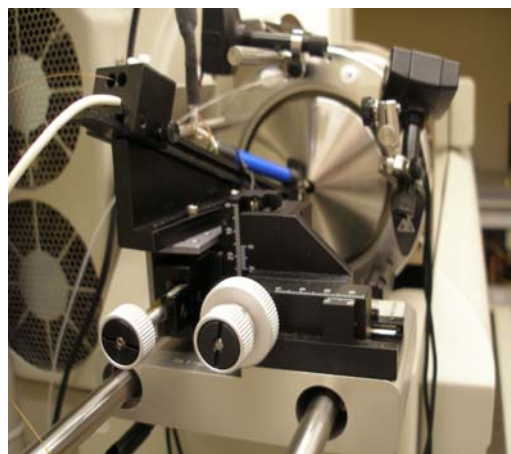


## NanoLC MS Source Upgrades For the Bruker and AB Sciex mass spectrometers

- Superior sensitivity, precision and flexibility
- Easy to install and use
- Nanospray with or without sheath gas
- Microspray with sheath gas
- Single or dual-column holder and rail
- Compatible with Phoenix S&T's column heaters
- Affordable



*PST-DUAL-AB installed on an AB Sciex 4000 with a Nanospray II source. We thank Dr. Richard Helm of VirginiaTech for providing the picture.*

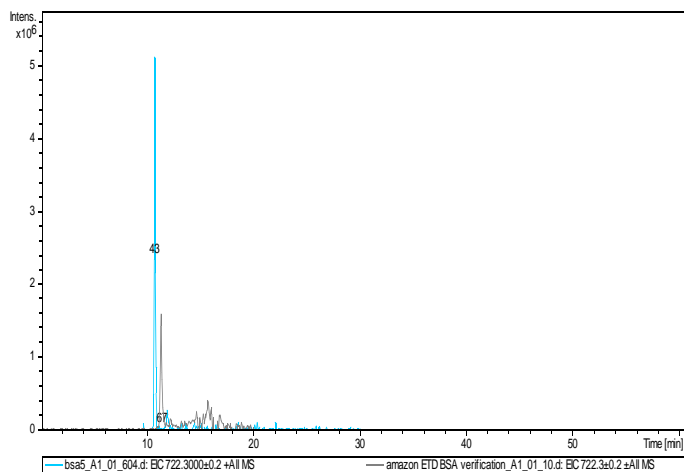
### Model numbers:

**PST-MS-PROBE** upgrade for the Bruker Daltonics' NSI source for the Amazon™ MS

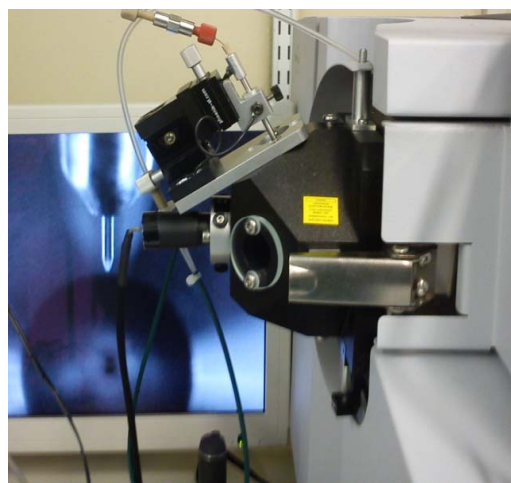
**PST-MS-AB** upgrade for the AB Sciex's Nanospray II™ source for the QTRAP™ MS

**PST-DUAL-AB** upgrade the AB Sciex's Nanospray II™ source to a dual-column source

**Nimbus-AB** upgrade the Nanospray II™ or III™ to the Nimbus automated dual-column source



*5 fmol BSA PST-MS-BD vs 5 fmol BSA Bruker NSI . We thank Dr. Mike Myers of ICGEB for sharing the data.*



*PST-MS-Probe installed on a Bruker Amazon ETD*